

Villages on or near
the Mountain Railway



SIERRA LEONE MOUNTAIN RAILWAY

The Mountain Railway ran from Water Street in Freetown for 5½ miles to Hill Station, serving a number of Freetown suburbs on it's route. The steeply graded line climbed from almost sea level to an altitude of 820 feet. The railway was opened in 1904 and closed in 1929.



Water Street, Freetown. The tracks of the Mountain Railway are in the foreground, curving away to the right. The station for this railway is beyond the Telegraph Office on the right of the picture.

WATER STREET TELS.

From the mid 1880's Sierra Leone had a telegraphic service. The network spread as the railway was extended inland from Freetown

The Freetown telegraph office was in Water Street near the railway station.



57

B. & C. Form Message No.

POSTS AND TELEGRAPHS, SIERRA LEONE

Check Sheet No.	Prefix	Time Handed in	Office of Origin and Service Instructions	No. of Words
9	A	945a	Portloko	14

Received {

At *9:45* TO *Richard*

From *Portloko*

By *A* 37 Percival St Freetown

At

To

By

Our very best wishes Florence and Melville

FROM *Bola John*

N.B.—This form must accompany any inquiry respecting this telegram.
The public are expressly requested to take notice that messages are only forwarded on the condition that no responsibility is incurred for delay in transmission or delivery, or for non-transmission or non-delivery, or for mistakes from whatever cause they may arise.
G.P. 2524/54/20,000-100/1.55. P. & T. Form No. 92.

1955. Telegram, shown at 64% actual size, sent from Port Loko to Freetown and franked by the WATER STREET TELS. mark.

SIERRA LEONE MOUNTAIN RAILWAY

Cotton Tree Station on the Mountain Railway was one mile from the terminus at Water Street in Freetown. The station was dominated by the huge Cotton Tree after which it was named.



Lisk-Carew Brothers, Photo., Freetown, Sierra Leone. Registered.
COTTON TREE RAILWAY STATION 3.30 p.m. BUNGALOW TRAIN, FREETOWN.



WILBERFORCE

Wilberforce is three miles west of Freetown, on the Mountain Railway to the town of Hill Station. The post office was first opened in 1892, closed a few years later, and reopened in 1905, when the railway was completed

During the mid 1950's a postmark with the abbreviated 'WFORCE' was issued



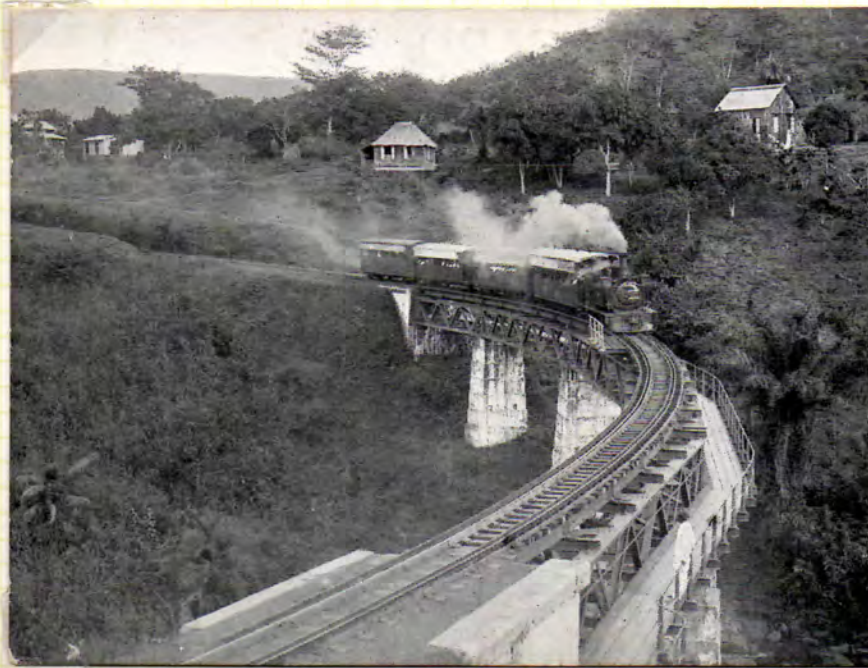
WILBERFORCE
STATION,
SIERRA LEONE.

A. Lisk-Carew, Photo., Freetown, Sierra Leone.

Wilberforce station in the early days of the railway

SIERRA LEONE MOUNTAIN RAILWAY

The 235 feet long bridge across the Congo river was the largest on the Sierra Leone Mountain Railway which ran for 5½ miles between Freetown and Hill Station.



Congo Bridge,
Mountain
Railway,
Sierra Leone.

Registered.
Lisk-Carew Brothers, Photo., Freetown, Sierra Leone.



Congo Town Bridge (Sierra Leone Mountain Railway)

HILL STATION

Post office opened 1905. Hill Station was at the end of the 5½ mile long Sierra Leone Mountain Railway which ran from Freetown. Post office and railway were both closed in 1929.



1912. 'HILL STATION' postmark applied off the stamp, which was cancelled at Freetown



Hill Station. This was at the end of the Sierra Leone Mountain Railway

SIERRA LEONE MOUNTAIN RAILWAY

As well as villages with stations along the Mountain Railway there were others within a short distance of the railway.



MURRAY TOWN



GLOUCESTER



BERKEEEN



REGENT



CONGO X RDS



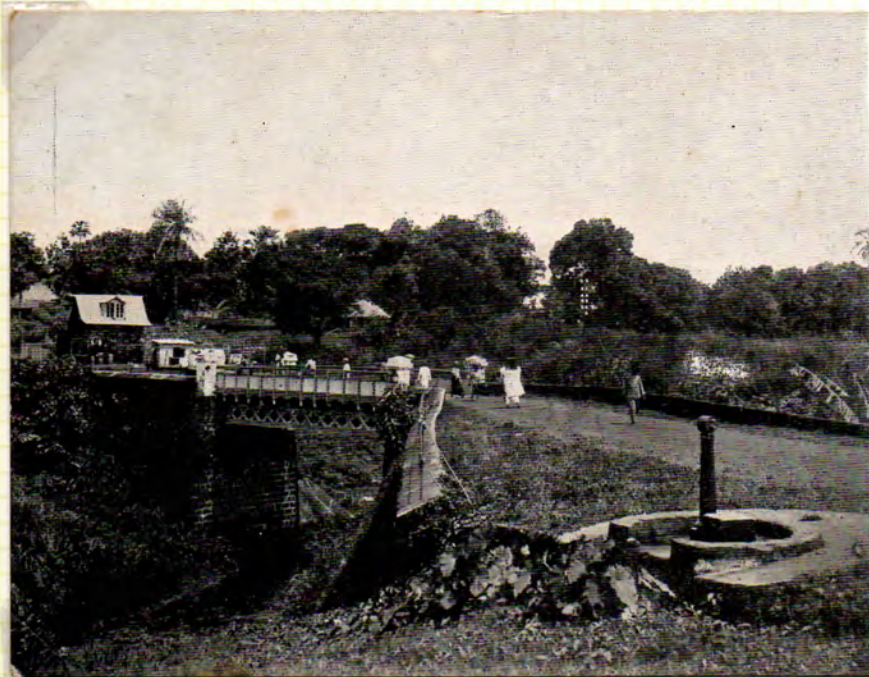
GODERICH



LUMLEY

KING TOM BRIDGE

West of Freetown, this post office was opened in 1904. The name was taken from the then chief of the Temne people. The post office was closed in 1916.



King Tom's
Bridge,
Freetown.

Registered.
List-Carew Brothers, Photo., Freetown, Sierra Leone.

NEW ENGLAND

Near Freetown, this post office was opened in 1946, when a temporary skeleton type of postmark was issued. This was replaced by the more familiar type of datestamp during the following year.

